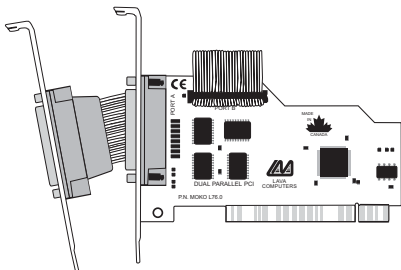


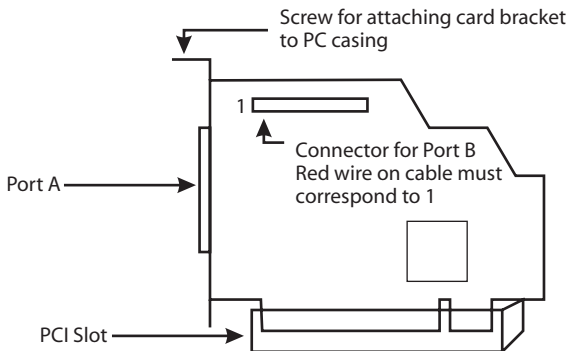
Lava Dual Parallel-PCI Installation Manual



Rev. B00

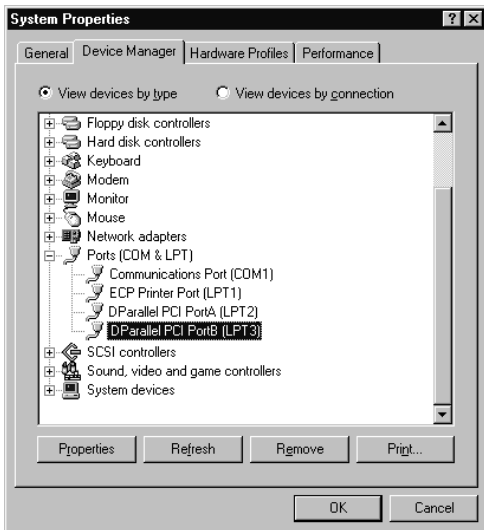
Windows Hardware and Driver Installation

1. Before opening the casing of your computer, make sure that all power is off.
2. Locate an unused backplane slot in your PC casing (preferably one that does not correspond to a slot), and fit the Port B cable into it. Insert the Dual Parallel-PCI into an unused PCI slot.
3. Screw the metal brackets of the Dual Parallel-PCI card to your PC's casing and replace the machine's cover.
4. Connect your parallel (printer) cable to the port on the Dual Parallel-PCI card and turn the PC on.
5. When Windows starts, it will find a Parallel-PCI Controller and will ask you for a driver for this device. When prompted, insert the installation diskette into your floppy drive. After copying the necessary files from the diskette, Windows will ask if you wish to restart your PC to complete the installation. Choose **NO**. Note:



Windows XP may display a message to the effect that the drivers are not digitally signed. This warning can be ignored.

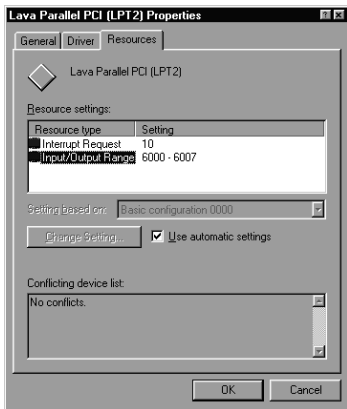
6. Windows must detect each of the parallel ports on the Dual Parallel-PCI card individually. The second port will therefore only be detected after the first port has been installed. Once both ports have been detected Windows must be restarted to complete the installation.
7. The Dual Parallel-PCI card's ports will appear in Control Panel\System|Device Manager under Ports, as a listing similar to the one below. If required, settings may be customized by clicking on a particular port and then clicking Properties. Please note that changes to default settings may be required by users connecting the Dual Parallel-PCI card to a non-printer peripheral (see reverse). Users connecting a printer should use default settings.



Connecting a non-printer device (e.g. external drive or parallel scanner) to the Dual Parallel-PCI

In Windows 95/98/ME (not Windows 2000/XP) some parallel port devices require parallel ports that use standard (legacy) ISA LPT addresses (0278h or 0378h). Because the Dual Parallel-PCI card is a fully compliant PCI device, its default addresses (Input/Output Ranges) are beyond the standard range of ISA I/O addresses. In order to connect such a peripheral to the Dual Parallel-PCI card, the I/O address range of the port being used with that peripheral must therefore be changed manually. This section describes how this is done.

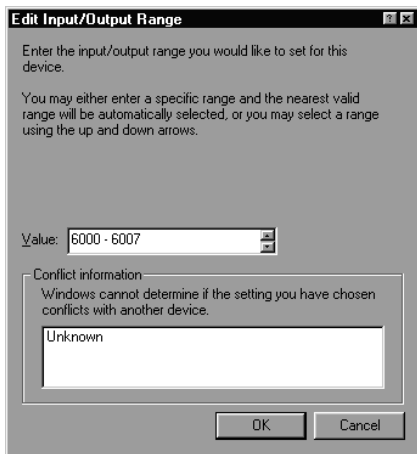
1. Open Control Panel\System|Device Manager and find the appropriate listing under Ports. Click Properties, and proceed to the Resources tab. The following screen will appear (Note: the Input/Output Range and Interrupt of your particular configuration may differ from the one below).



2. Remove the check mark from the Use Automatic Settings box.

Note: In some cases Windows will give an error message to the effect that "Windows cannot modify this resource" at this point. If you are unable to access the settings for changing system resources, reboot the system in Safe Mode to make changes to resource settings. (To enter Safe Mode, press the F8 key while the system is rebooting.)

3. Double-click on the words Input/Output Range. The following screen will appear:



4. Use the up/down arrows to scroll to one of the following range settings, or type them in manually:

0278 – 027F

0378 – 037F

0338 – 033F

0238 – 023F

02B8 – 02BF

5. After one of these has been entered, click OK. Windows will verify whether you would like to force this particular configuration rather than the automatic one that it had previously chosen. Click Yes.
6. Verify that there are no conflicts with addresses being used by other devices already in your PC. If no conflicts are found, restart Windows.

Using Zip Drives with the Dual Parallel-PCI

NOTE: The default input/output ranges for the Dual Parallel-PCI card work with Zip Drives using new lomegaware software. The instructions "Connecting a non-printer device" given above apply to Zip Drive users using old versions of lomegaware.

For best results with Windows 2000 and XP, we recommend downloading the latest "lomegaware" from lomega.

Additional instructions on optimizing Zip Drive performance with the Dual Parallel-PCI can be found at www.lavalink.com.

Release Notes:

- A. This documentation describes the installation of the Dual Parallel-PCI card on a Windows95/98/Me/2000/XP PC. Instructions and software for DOS, Windows 3.x, and Windows NT 4.0 may be found in the NT4.0 subdirectory of the Installation diskette. Instructions for Linux installation are available at www.lavalink.com.
- B. Because the Dual Parallel-PCI card uses PCI (not ISA) I/O address ranges, its ports will never be seen by your BIOS at boot-up as standard parallel ports (occupying 0278h or 0378h) even if one or more addresses has been changed in Windows using the above procedure. This is normal, and does not indicate a fault in your Parallel-PCI card.
- C. The Dual Parallel-PCI card will not work at address 0278h or 0378h if it is installed in a PCI slot that is behind a PCI-to-PCI bridge. If you have trouble installing the Dual Parallel-PCI card, try seating it in a different slot.
- D. In standard installations of Windows 2000/XP, the I/O address cannot be changed to a legacy address.
- E. Some devices (like external CD writers) default to "word mode" (ie: 16-bit data transfer) for fastest performance. Such devices need to operate in "byte mode" (8-bit data transfer) to work with the Dual Parallel-PCI. Look in your device software for a "byte mode" setting, and enable it.

Lava Technical Support

9:00 am to 5:30 pm Monday to Friday (Eastern Time)

Tel: +416 674-5942

Fax: + 416 674-8262

E-mail: tech@lavalink.com

Internet: www.lavalink.com



Lava Computer MFG Inc.



This device complies with part 15 of the FCC Rules. Operation is subject to the following conditions: (1) This device may not cause harmful interference, and (2) this device must accept any interference received, including interference that may cause undesired operation.

Lava Computer MFG Inc. 908 Niagara Falls Blvd. #629. North Tonawanda NY 14120-2060

